

Implant Restorative Options

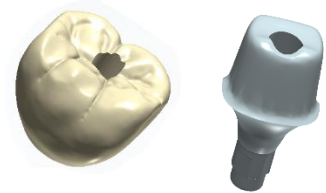
Cement retained Custom abutment:

- Crown and custom abutment design NO screw access hole in crown.
- This is ideal for tight interproximal clearance on smaller implant platforms, Less than perfect screw access entry on the facial or incisal edge of anterior teeth.



Custom Screw-mentable Design:

- Crown with screw access hole and custom abutment will come to you in 2 pieces, for in office cement.
- This is a good option for cases that do not allow for parallel contacts/draw.



Custom Screw retained Design:

- Crown and abutment cemented together in lab and delivered as one piece.
- This is ideal for cases that have a parallel draw or willing to adjust adjacent contacts to seat properly.



Custom Cast abutment (UCLA):

- True all in one design. Porcelain is stacked directly to the anatomically casted Gold/High Nobel abutment.
- _____ OR _____
- A similar option we have for this method would be a CAD designed high-quality cobalt- chromium alloy for venerable screw retained restorations. (Straumann Specific)

**For further Implant case planning and extensive material options*

*contact Megan 303-280-5280 / megan@5280creations.com**



